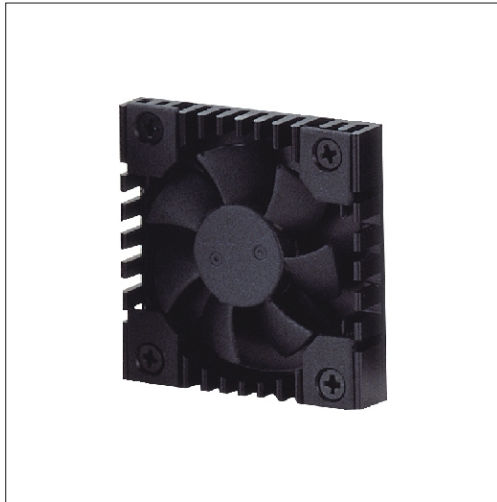
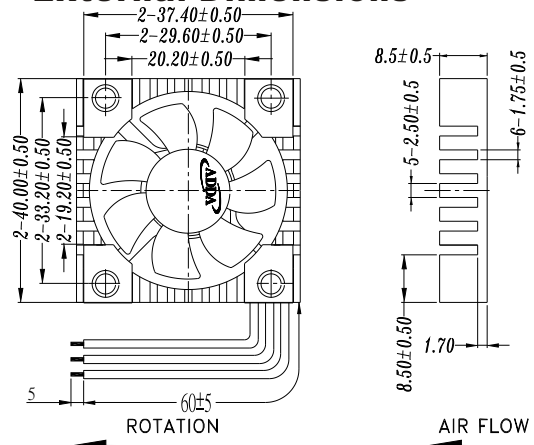


◀40X40X08mm Series▶



Spot cooling,also suitable for small space requirements, laptops PC and notebook,etc.,.

External Dimensions



Frame:Plastic(UL:94v-0)
Impeller:Plastic(UL:94v-0)
Bearing:Hypro bearing
Lead wire:UL1571AWG28
OPERATING TEMP*:-10C~70C
VOLTAGE AVAILABLE:5V,12V
*:-10C~60C for fans with sleeve/ball combination bearings.

Specifications(Nominal)

*:Noise is measured at the distance of one(1) meter from the axis of intake.

Frame size (mm)	Model No.	Bearing System Type	Rated Voltage (v)	Rated Current (A)	Rated Power (W)	Rated Speed (rpm)	Bearing type: =Ball =Sleeve =1B1S =Hypro bearing				Noise Level (dB/A)	Weight (g)
							Maximum AirFlow (CMM)	Maximum AirFlow (CFM)	Maximum Pressure (InAq)	Maximum Pressure (mmAq)		
40x40x08	AP0405MX-J70		5	0.14	0.700	7000	0.133	4.70	0.111	2.78	28.0	15
	AP0405MX-J73		5	0.10	0.500	7000	0.133	4.70	0.111	2.78	28.0	
	AP0405HX-J73		5	0.13	0.650	8000	0.139	4.90	0.111	2.78	28.0	
	AP0412MX-J70		12	0.08	0.960	7000	0.133	4.70	0.150	3.75	35.0	

Specifications subject to change without notice.

*Motor protective circuit and third lead wire functions

0	1	2	3	4	6	7	8	9	A	B
✓	✓		✓							

*Safety approvals

